



NEWSLETTER

WHEELING HISTORICAL SOCIETY

August 2006



Message From The President

Dear Members and Friends:

Here we are in the beginning of August and you have to say this has been one hot heat wave. Our August 23rd meeting will soon be here and we are hoping you all can attend as we will be discussing our annual picnic which is planned for September 10, 2005. 11 p.m. Fliers will be sent out with more information as soon as all plans have been finalized.

As always, please tell your friends and neighbors they are all welcome to come. We are hoping friends will bring old pictures of the past to share with all of us. As always you bring a lunch to share with your family and the desserts and drinks will be provided by members of the society. Again this will take place at Chamber Park, 251 N. Wolf Road and we will be considering opening the museum for those interested in visiting. There is so much history there but we are always looking for more from families who have presided in the village for many years. With the passage of time everything changes it seems, even more rapidly now than in the past.

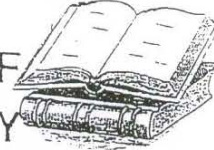
We are looking forward to the meeting and hope to see you there. Please try and make it.

Elaine Simpson, President

THOUGHT FOR THE DAY

The ten most powerful two-letter words:
IF IT IS TO BE, IT IS UP TO ME.

A BIT OF HISTORY



PATH USED BY INDIANS

By Tom Edwards #2

Continued.....

WHEELING AND half Day were established nearly 130 years ago on the trail that is now Milwaukee Avenue. Libertyville was picked as the Lake County seat in 1839, probably primarily because it was on Milwaukee Road.

The road was surveyed in 1830, with one of the surveyors, George C. Klehm, describing it as a "crooked wagon track. He also related that the surveying party enjoyed drinking liquor while working.

The intersection of Touhy and Milwaukee was known as Planck's Point. Hickory Grove was just south of the Villa Venice where the road crosses the Des Plaines River. Half Day was then Indian Creek.

Wheeling first prospered and became known as a stage coach stop where passengers rested and dined at mid-day (It was about half a day's journey to Wheeling from Chicago.) Wheeling's tradition-steeped Union Hotel, still flourishing and a widely known dining place, was established during the stage coach era.

THE GRAND old avenue became gaudy and tawdry with neon signs during the Roaring 20s, continuing thusly through the 1950s.

But the Tri State Toll road drastically reduced traffic on Milwaukee Avenue. So much so that two-lane Dundee Road running east and west now carries about four times more traffic through Wheeling than does Milwaukee Avenue with its four lanes. Truckers and overland travelers have just about disappeared from Milwaukee, and the traffic on it is primarily local and regional.

Did You Know?

Ten percent of the Russian government's income comes from the sale of vodka.

Ninety percent of New York City cabbies are recently arrived immigrants.

In 10 minutes, a hurricane releases more energy than all the world's nuclear weapons combined.

Average age of the Rolling Stones: 50.6.

Elephants can't jump. Every other mammal can.

The cigarette lighter was invented before the match.

If you yelled for 8 years, 7 months, and 6 days, You would have produced enough sound energy to Heat one cup of coffee.

The human heart creates enough pressure when it Pumps out to the body to squirt blood 30 feet.

REMEMBER WHEN?

Getting an ice cream off the ice cream truck; a million mosquito bites and sticky fingers; jumping on the bed; pillow fights; running till you were out of breath; laughing so hard your stomach hurt; being tired from playing and your first crush....remember that?

Remember when Kool-aid was the drink of summer; toting your friends on your handle bars; wearing your new shoes on the first day of school and class field trips.

Didn't that feel good, just to go back and say, Yeah, I remember that! There's nothing like the good old days. They were good then and they're good now when we think of them.

Share some of these thoughts with a friend who can relate, then share it with someone that missed out on them.

FOR THOSE WHO THOUGHT THEY KNEW EVERYTHING!

The first product to have a bar code was Wrigley's gum

The king of hearts is the only king without a mustache.

American Airlines saved \$40,000 in 1987 by eliminating one (1) olive from each salad served in first class.

Venus is the only planet that rotates clockwise. (Since Venus is normally associated with women, what does this tell you!)



PLEASE
GET
WELL!

To all our friends and members who have been under the weather or in the hospital; we want to you to know, we are always thinking of you.

EVER WONDER WHY?

Written:

On packaging for a Rowenta iron: "Do not iron clothes on body."

On Booth's Children Cough Medicine: "Do not drive a car or operate machinery after taking this medication."

On Nytol Sleep Aid: "Warning: May cause drowsiness."

On Sunbury's peanuts: "Warning: contains nuts."

On a Swedish chainsaw: "Do not attempt to stop chain with your hands."



**WHEELING HISTORICAL SOCIETY
AND
THE WHEELING GARDEN CLUB**

CORDIALLY INVITES YOU TO ATTEND

" AN OLD-FASHION PICNIC "

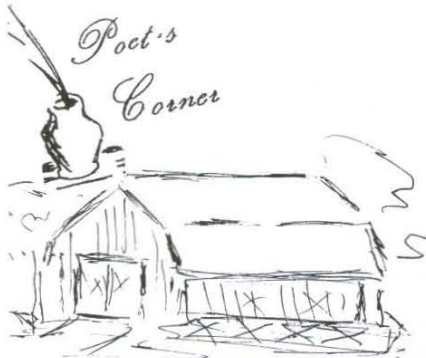
SUNDAY, SEPT. 10, 2006

11:00AM – 3:00 PM

CHAMBER COMMUNITY CENTER & PARK
251 N. WOLF ROAD
WHEELING, IL

- Bring a picnic lunch to share with your family; beverage and dessert will be provided by members of the Historical Society
- Bingo will be played at 1:00 pm. Please bring a wrapped "white elephant" for bingo prizes.
- T-shirts will be on sale \$10.00 each in the Center.
- Everyone is invited; bring your friends and neighbors.
- Make it a day of fun, games, and meeting old and new friends.

Any questions feel free to call : Elaine Simpson , Pres. 847-541-8692



Farm Sale

When Pa made up his mind to sell,
 Us kids let out a joyful yell.
 We felt we wasn't born to chase
 Around a wore-out backwoods place,
 An' spend our lives in sweat an' toil
 A-buildin' up its rocky soil;
 An' so we'd fume an' fret an' fuss,
 An' claim the life was killin' us,
 Till Pa made up his mind to sell,
 An' then us kids let out a yell.

When Pa sold out an' moved away,
 We didn't feel so pert an' gay,
 We sort of missed the country road
 With folks a-passin' by we knowed;
 The homely things we used to scorn,
 The orchard an' the wavin' corn,
 An' stony fields we couldn't bear,
 With placid cattle grazin' there,
 Grewed dearer to us day by day,
 When Pa sold out an' moved away.

When Pa sold out an' moved away,
 He seemed to get more bent an' gray,
 He sort of missed the whippoorwills,
 That call an' echo through the hills
 Of evenin's when the fireflies flit
 The meadows an' the stars are lit,
 An' on the gentle breezes floats
 The janglin' cowbells' distant notes;
 An' Ma, too, couldn't seem to stay
 So cheerful, when we'd moved away.

When Pa sold out an' moved away
 We sort of found ourselves, one day,
 Back on the old farm we'd despised,
 A-trampin' round it, with our eyes
 All eager, an' our hearts plum sore
 An' achin', when we stood before
 The man we'd sold to, knowin' true
 The doom his will could send us to.
 Say folks, you ought to heard us yell,
 When he spoke up an' said he'd sell!

—Author Unknown



Cook's
Kitchen



Apricot Almond Bars

CRUST:

1-1/2 cups all-purpose flour
 3/4 cup confectioners' sugar
 1/2 cup butter or margarine,
 softened

1/4 cup shortening

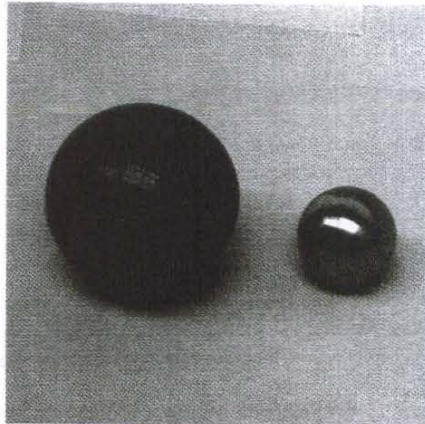
TOPPING:

1 egg, lightly beaten
 1/2 cup sugar
 1/2 cup apricot preserves
 1 tablespoon butter or
 margarine, softened
 1/2 teaspoon vanilla extract
 1 cup sliced almonds

In a mixing bowl, beat the flour, sugar, butter and shortening. Pat into the bottom and 1/2 in. up the sides of an ungreased 13-in. x 9-in. x 2-in. baking pan. Bake at 350° for 15-18 minutes or until lightly browned. For topping, beat egg, sugar, preserves, butter and vanilla in a mixing bowl until smooth. Spread over hot crust. Sprinkle with almonds. Bake at 350° for 15-20 minutes. Cool. Yield: 2- to 3 dozen.

WHATZIT

These two small metal balls stick together magnetically to solve an old problem in a new way. What are they for, and why are they different sizes?



Puzzle by Scot Morris

*a pair holds diff sizes
makes the puz. tilt back*



"The object of this Society shall be the Discovery, preservation And dissemination of Knowledge about the Community of Wheeling"

Its traffic volume will probably diminish much more with the completion of still other parallel expressways through the northwest suburbs, and the improvement of other roads such as Palatine and Dundee.

Continued.....

NOTE: I don't know when this article was written but times have sure changed!

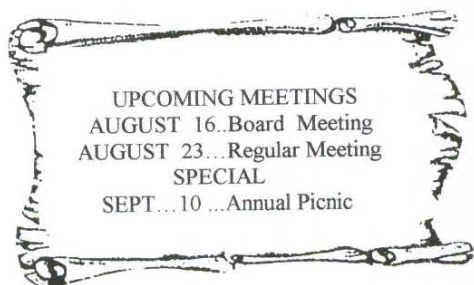


Things are still moving along at the museum Linda has not been with us due to taking care of Ron (who has broke his foot) and taking care of her grandchildren while their parents are on a much needed vacation.

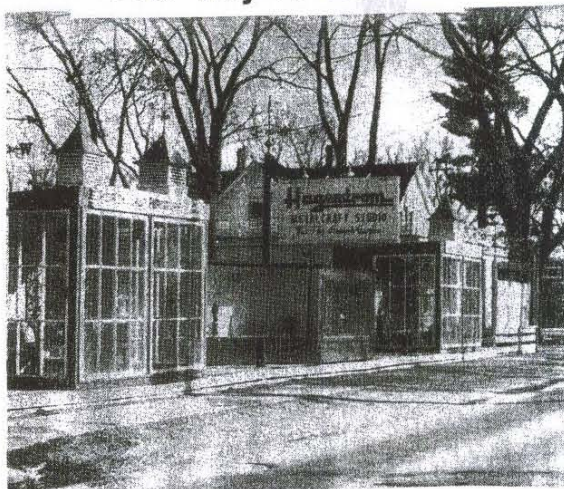
Marilyn, Beverly and Patti are going about taking care of the business at hand.

We are still inventorying items from the estate of Ian Taylor and Marilyn with other duties is continuing to document obituaries while Beverly is keeping us up to date with newspaper items.

We have been informed by Mitch that painting the museum and building a new ramp for the handicapped are in the plans for this coming fall



The Way It Was!



HAGERSTROM Metalcraft Studio which was located on Milwaukee Avenue was a nationally famous institution in Wheeling, and one of the many attractions of the historic Highway. Next to it was the "Seven Countries Restaurant" (which is now "Don Roths") and one of the many unique dining places on the highway in the Wheeling vicinity.

NAME THE YEAR!

Civil War ends and Lincoln is assassinated Apr 14.
German Presbyterian Church is built on Dundee Road around the corner from Filkin's Tavern.
William Metz opens blacksmith shop and Samuel Reese opens wagon shop. Philip Armour constructs a slaughter house in Chicago, contributing to prosperity of Wheeling farmers raising cattle and pigs in 1862, 1865, 1869?

Reese wagon shop sold to Louis Fischer. Population was 200 in 1862, 1863 1868?

Continent is bridged by railroads , industrialization Begins in 1869, 1871, 1873?

School burns and two-story structure replaces it in 1869, 1870, 1875?

Chicago fire illuminates Wheeling at night in 1868, 1870, 1871?

ANSWERS: 1781 '0281'6981'8981 '6981
1865,1868,1869,1870,1871